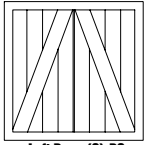
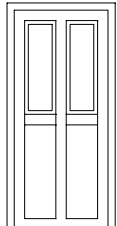


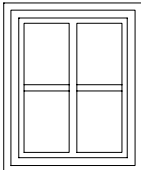
Freight Door (3) D2



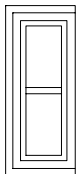
Loft Door (2) D3



Entry Door (2) D1



Lower Side Window (4) W1



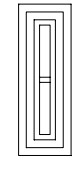
Upper Side Window (8) W2



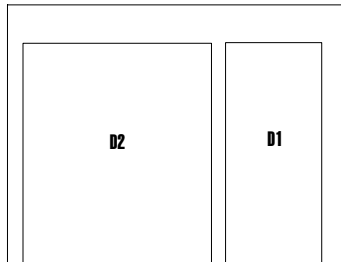
Lower End Window (4) W3



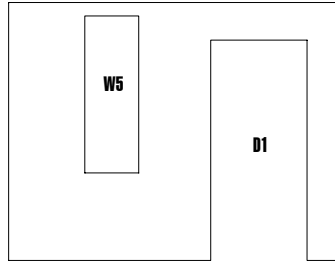
Front Insert Window (1) W5



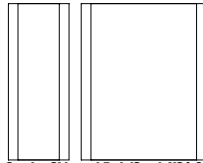
Upper End Window (4) W4



Rear Insert (1) RI



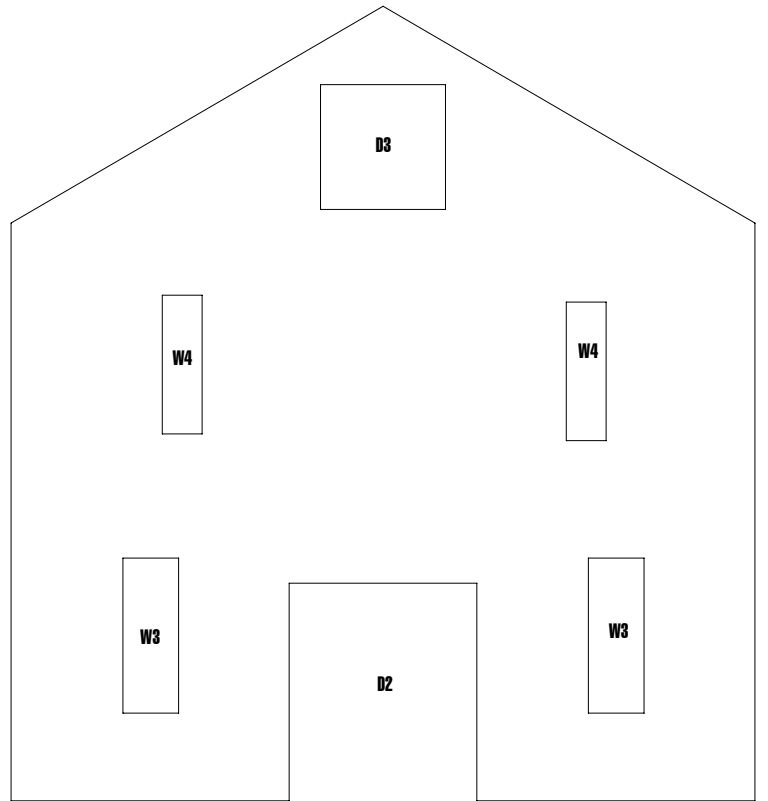
Front Insert (1) FI



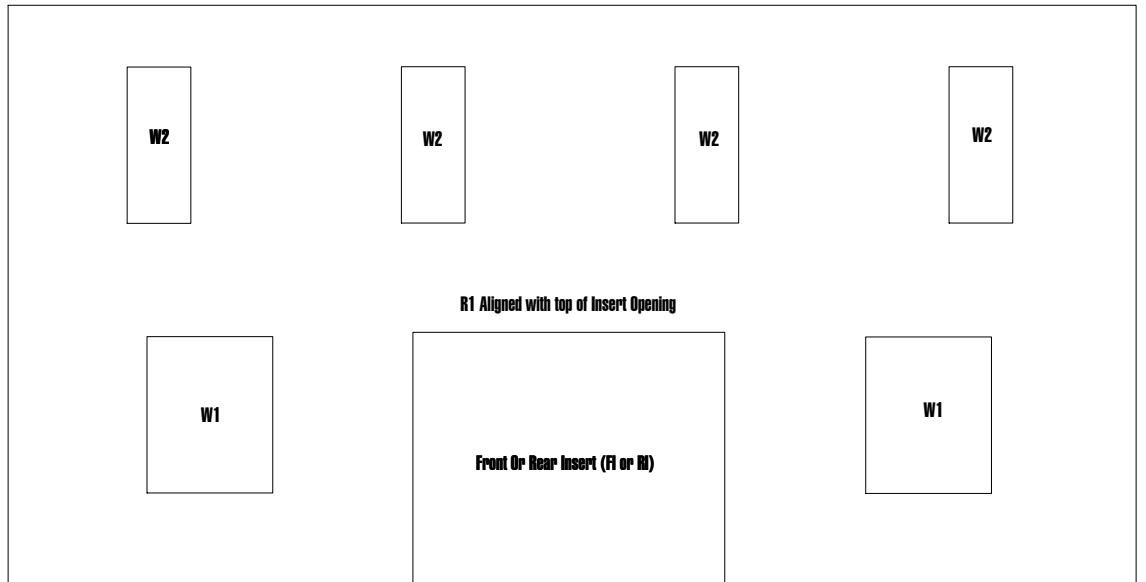
Vent Stack - Side and End (2 ea) VS1 & VS2



Small Roof Section (2) R2



Building End (2) B2



R1 Aligned with top of Insert Opening

Front Or Rear Insert (FI or RI)

Building Side (2) B1



2 ea VS1 & VS2 assembled as Vent Stack fitted in to hole in roof

See <http://www.coloradomodel.com/bldginfog.htm> for more information on our kits painting hints, photos, and other information you should know

Main Roof Section (2) R1